

# METER BOXES

BY TRICEL

**40+** YEARS  
TECHNICAL  
EXPERIENCE



## GRP ARCHITRAVE OVERBOX

K PROTECTOR FRAME SUITABLE FOR ALL IRISH RECESSED  
ELECTRIC METER BOXES

COMPLIANT WITH IRISH STANDARDS

STOCK CODE: 220903



**TRICEL**

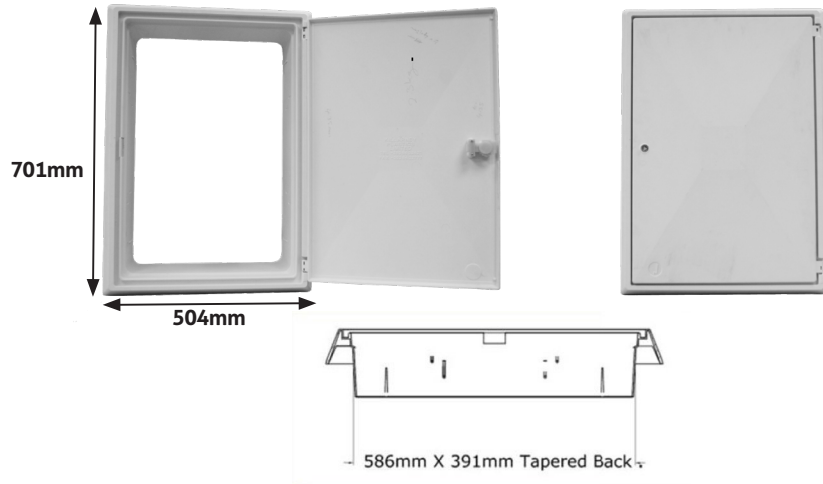
GENERATIONS OF INNOVATION

STOCK CODE:  
220903

# GRP ARCHITRAVE OVERBOX

K PROTECTOR FRAME SUITABLE FOR ALL IRISH RECESSED ELECTRIC METER BOXES COMPLIANT WITH IRISH STANDARDS

The K Protector is an overbox solution, used to repair broken meter boxes. There is no requirement to remove the damaged box, nor to employ an electrician to disconnect the meter. The K Protector Frame overbox is easily fitted in place.



**METER  
BOXES**  
BY TRICEL

**40+**  
YEARS  
TECHNICAL  
EXPERIENCE

## DIMENSIONS

701mm high x 504mm wide.

The GRP Architrave overbox contains the following:  
1 x frame, 1 x door, 1 x 310mm Silicone, 1 x short reach key, 4 x 3/4" screws & 1 x carton

## SPECIFICATIONS & KEY FEATURES

- Compliant with ESB Networks specifications.
- Meter box cover to suit recessed meter boxes.
- Repair solution for all Irish recessed meter boxes.
- Manufactured from highly durable and fire retardant Sheet Molding Composite (SMC).
- SMC will not rust or corrode.
- Water tight IP45 design.
- Easily cleaned.
- This cover comes with a tapered back which will fit Wavin, Killarney Plastics, Medium Permali and Tricel meter boxes.
- Supplied with hinges, lock and key.
- Sealant and self-tapping screws included

\* Approximate dimensions.

In accordance with Tricel's normal policy of product development these specifications are subject to change without notice.

**TRICEL UK**

**Tel: +44 (0)1453 791616**

Registered number 02868648

**TRICEL IRL**

**Tel: +353 (0)64 663 2421**

Registered number IE 075014

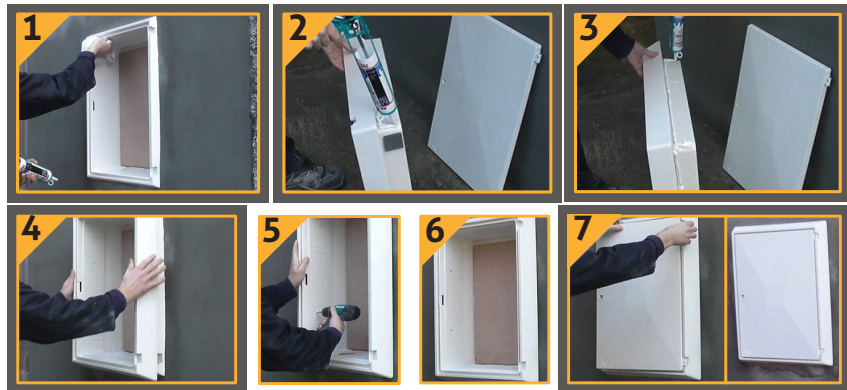
# METER BOXES

BY TRICEL

# 40+ YEARS TECHNICAL EXPERIENCE

## INSTRUCTIONS

1. Clean the inside of the frame of existing meter box with a cloth. **See figure 1.**
2. Apply Silicone around the frame of the GRP Architrave Overbox. Put the nozzle of the cartridge touching the architrave edge. Apply a thick bead of silicone. **See Figure 2.**
3. Apply a thick bead of Silicone in the top and bottom corners. **See Figure 3.**
4. Slide the GRP Architrave Overbox in place into the existing meter box (Check that the GRP Architrave Overbox is in its correct orientation). **See Figure 4.**
5. Drill 4 holes with a diameter 3.5mm drill bit in the moulded slots. **See Figure 5.**
6. Secure the GRP Architrave Overbox in place with self-tapping screws. **See Figure 6.**
7. Attach the meter box door to the GRP Architrave Overbox and close. **See Figure 7.**



\* Approximate dimensions.

In accordance with Tricel's normal policy of product development these specifications are subject to change without notice.

**TRICEL UK**

**Tel: +44 (0)1453 791616**

Registered number 02868648

**TRICEL IRL**

**Tel: +353 (0)64 663 2421**

Registered number IE 075014