

# TREATMENT PERFORMANCE RESULTS

**Tricel (Killarney)**  
Ballyspillane Industrial Est., Killarney, Co. Kerry, Ireland

**EN 12566-3**  
Results corresponding to EN 12566-3 and S.R. 66  
PIA-SR66-1512-1062

**Novo**  
Submerged fixed film

Nominal organic daily load	0.26 kg/d		
Nominal hydraulic daily load	0.90 m <sup>3</sup> /d		
Material	Glass reinforced plastic		
Watertightness	Pass		
Structural behaviour (Calculation)	Pass (also wet conditions)		
Durability	Pass		
Treatment efficiency (nominal sequences)		Efficiency	Effluent
		COD	91.6 % 52 mg/l
		BOD <sub>5</sub>	95.9 % 11 mg/l
		NH <sub>4</sub> -N	79.9 % 8 mg/l
		SS	95.3 % 16 mg/l
Number of desludging	Not more than once		
Electrical consumption	1.1 kWh/d		

Performance tested by:

**PIA – Prüfinstitut für Abwassertechnik GmbH**  
(PIA GmbH)  
Hergenrather Weg 30  
52074 Aachen, Germany

This document replaces neither the declaration of performance nor the CE marking.



Notified Body  
No.: 1739



Certified according to  
ISO 9001:2008

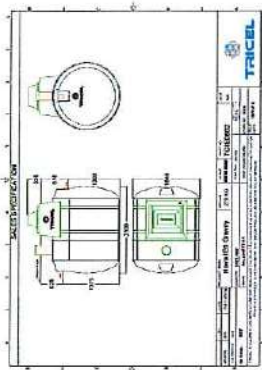
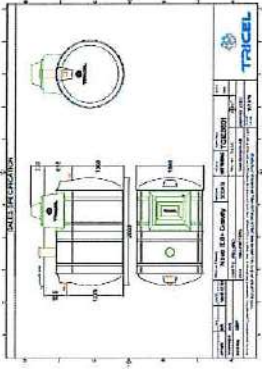
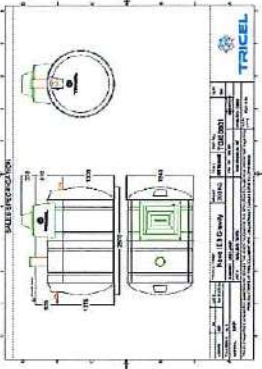


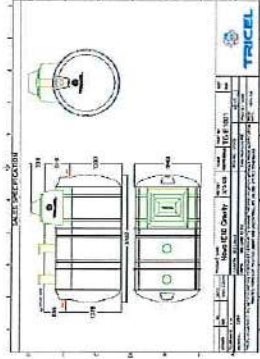
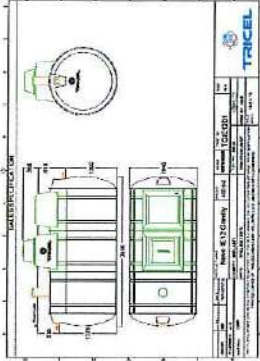
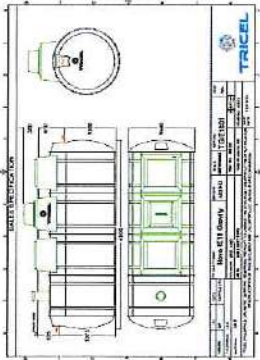
Prüfinstitut für Abwassertechnik GmbH  
*geprüft - tested - teste*

Elmar Lancé

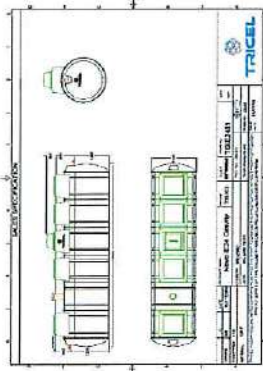
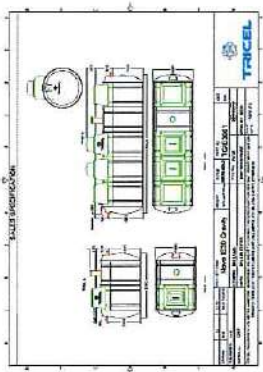
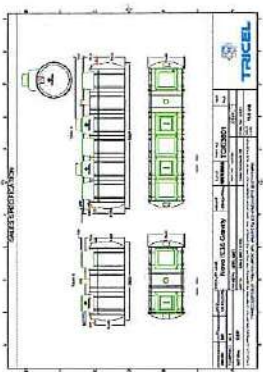
July 2016

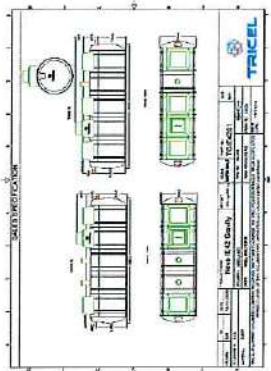
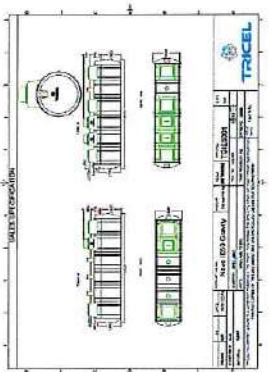
Novo range and its referring test reports:

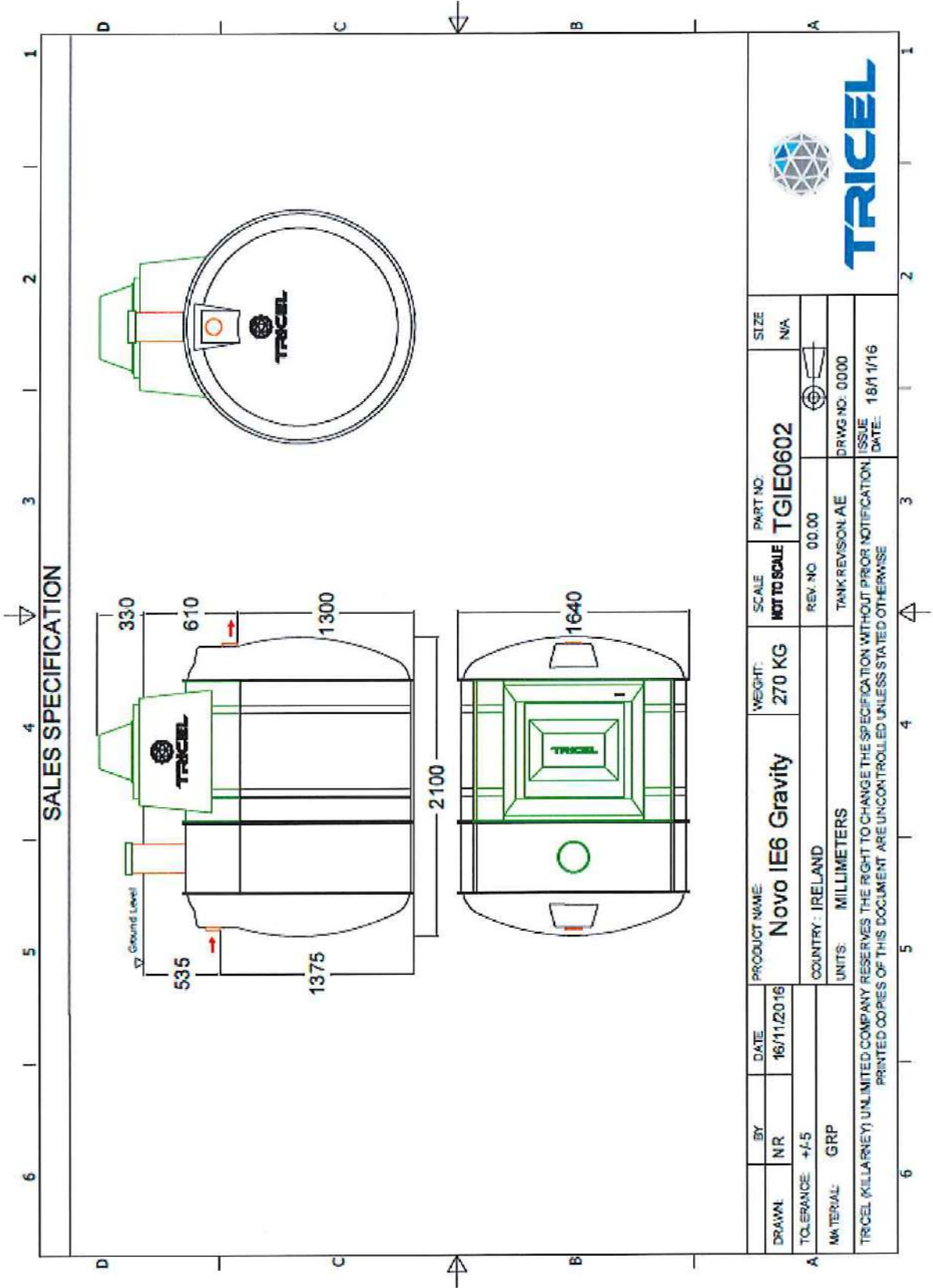
Population equivalent (PE)	Drawing of model of the range	Watertightness (EN 12566-3 Annex A)	Treatment Efficiency (EN 12566-3 Annex B)	Structural Behaviour (EN 12566-3 Annex C)	Durability
Initial Type Test (ITT) 6		Pass PIA2009-WD-AT0909-1055 PIA2015-WD/NC-1404-1021.01 PIA2015-WD/NC-1406-1031.01	Pass PIA2010-103B18SB <sub>e</sub>	Pass For wet ground conditions also, 1.25 m installation depth from inlet invert	Pass PIA2015-DH-1504-1023.01
6		Pass PIA2009-WD-AT0909-1055 PIA2015-WD/NC-1404-1021.01 PIA2015-WD/NC-1406-1031.01	Pass Range conformity according to S.R. 66:2015	Pass For wet ground conditions also, 1.25 m installation depth from inlet invert	Pass PIA2015-DH-1504-1023.01
8		Pass PIA2009-WD-AT0909-1055 PIA2015-WD/NC-1404-1021.01 PIA2015-WD/NC-1406-1031.01	Pass Range conformity according to S.R. 66:2015	Pass For wet ground conditions also, 1.25 m installation depth from inlet invert	Pass PIA2015-DH-1504-1023.01

Population equivalent (PE)	Drawing of model of the range	Watertightness (EN 12566-3 Annex A)	Treatment Efficiency (EN 12566-3 Annex B)	Structural Behaviour (EN 12566-3 Annex C)	Durability
10		Pass  PIA2009-WD-AT0909-1055  PIA2015-WD/NC-1404-1021.01  PIA2015-WD/NC-1406-1031.01	Pass  Range conformity according to S.R. 66:2015	Pass  For wet ground conditions also, 1.25 m installation depth from inlet invert	Pass  PIA2015-DH-1504-1023.01
12		Pass  PIA2009-WD-AT0909-1055  PIA2015-WD/NC-1404-1021.01  PIA2015-WD/NC-1406-1031.01	Pass  Range conformity according to S.R. 66:2015	Pass  For wet ground conditions also, 1.25 m installation depth from inlet invert	Pass  PIA2015-DH-1504-1023.01
18		Pass  PIA2009-WD-AT0909-1055  PIA2015-WD/NC-1404-1021.01  PIA2015-WD/NC-1406-1031.01	Pass  Range conformity according to S.R. 66:2015	Pass  For wet ground conditions also, 1.25 m installation depth from inlet invert	Pass  PIA2015-DH-1504-1023.01



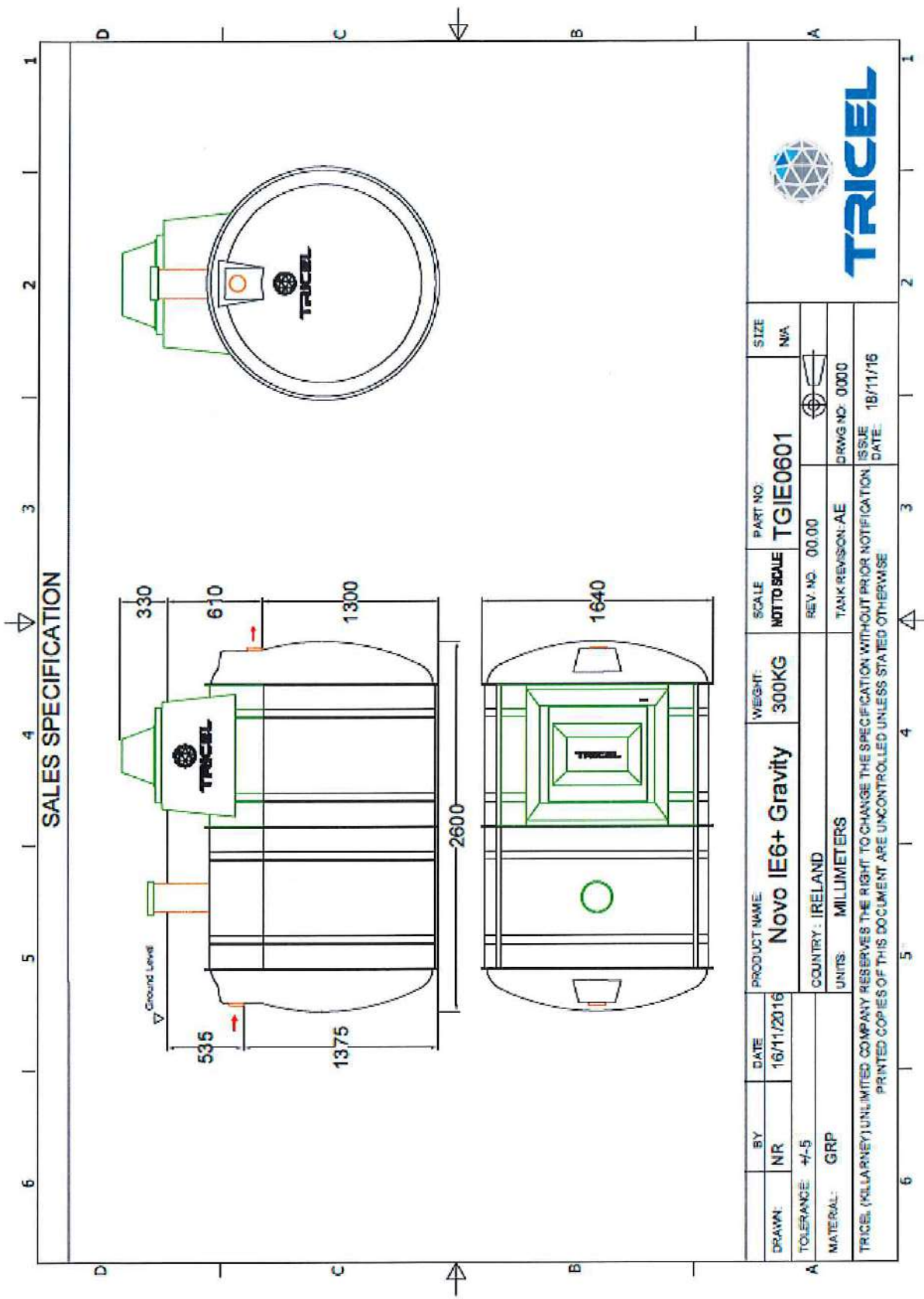
Population equivalent (PE)	Drawing of model of the range	Watertightness (EN 12566-3 Annex A)	Treatment Efficiency (EN 12566-3 Annex B)	Structural Behaviour (EN 12566-3 Annex C)	Durability
24		Pass PIA2009-WD-AT0909-1055 PIA2015-WD/NC-1404-1021.01 PIA2015-WD/NC-1406-1031.01	Pass Range conformity according to S.R. 66:2015	Pass PIA2013-ST-PIT-1303-1018.01 For wet ground conditions also, 1.25 m installation depth from inlet invert	Pass PIA2015-DH-1504-1023.01
30		Pass PIA2009-WD-AT0909-1055 PIA2015-WD/NC-1404-1021.01 PIA2015-WD/NC-1406-1031.01	Pass Range conformity according to S.R. 66:2015	Pass For wet ground conditions also, 1.25 m installation depth from inlet invert	Pass PIA2015-DH-1504-1023.01
36		Pass PIA2009-WD-AT0909-1055 PIA2015-WD/NC-1404-1021.01 PIA2015-WD/NC-1406-1031.01	Pass Range conformity according to S.R. 66:2015	Pass For wet ground conditions also, 1.25 m installation depth from inlet invert	Pass PIA2015-DH-1504-1023.01

Population equivalent (PE)	Drawing of model of the range	Watertightness (EN 12566-3 Annex A)	Treatment Efficiency (EN 12566-3 Annex B)	Structural Behaviour (EN 12566-3 Annex C)	Durability
42		Pass PIA2009-WD-AT0909-1055 PIA2015-WD/NC-1404-1021.01 PIA2015-WD/NC-1406-1031.01	Pass Range conformity according to S.R. 66:2015	Pass For wet ground conditions also, 1.25 m installation depth from inlet invert	Pass PIA2015-DH-1504-1023.01
50		Pass PIA2009-WD-AT0909-1055 PIA2015-WD/NC-1404-1021.01 PIA2015-WD/NC-1406-1031.01	Pass Range conformity according to S.R. 66:2015	Pass For wet ground conditions also, 1.25 m installation depth from inlet invert	Pass PIA2015-DH-1504-1023.01



BY: NR		DATE: 16/11/2016	PRODUCT NAME: <b>Novo IE6 Gravity</b>		WEIGHT: 270 KG	SCALE: <b>NOT TO SCALE</b>	PART NO: <b>TGIE0602</b>	SIZE: N/A
TOLERANCE: +1-5		COUNTRY: IRELAND		REV. NO: 00.00		TANK REVISION: AE		<b>TRICEL</b>
MATERIAL: GRP		UNITS: MILLIMETERS		DRWG NO: 0000		DATE: 16/11/16		
TRICEL (KILLARNEY) UNLIMITED COMPANY RESERVES THE RIGHT TO CHANGE THE SPECIFICATION WITHOUT PRIOR NOTIFICATION. PRINTED COPIES OF THIS DOCUMENT ARE UNCONTROLLED UNLESS STATED OTHERWISE.								

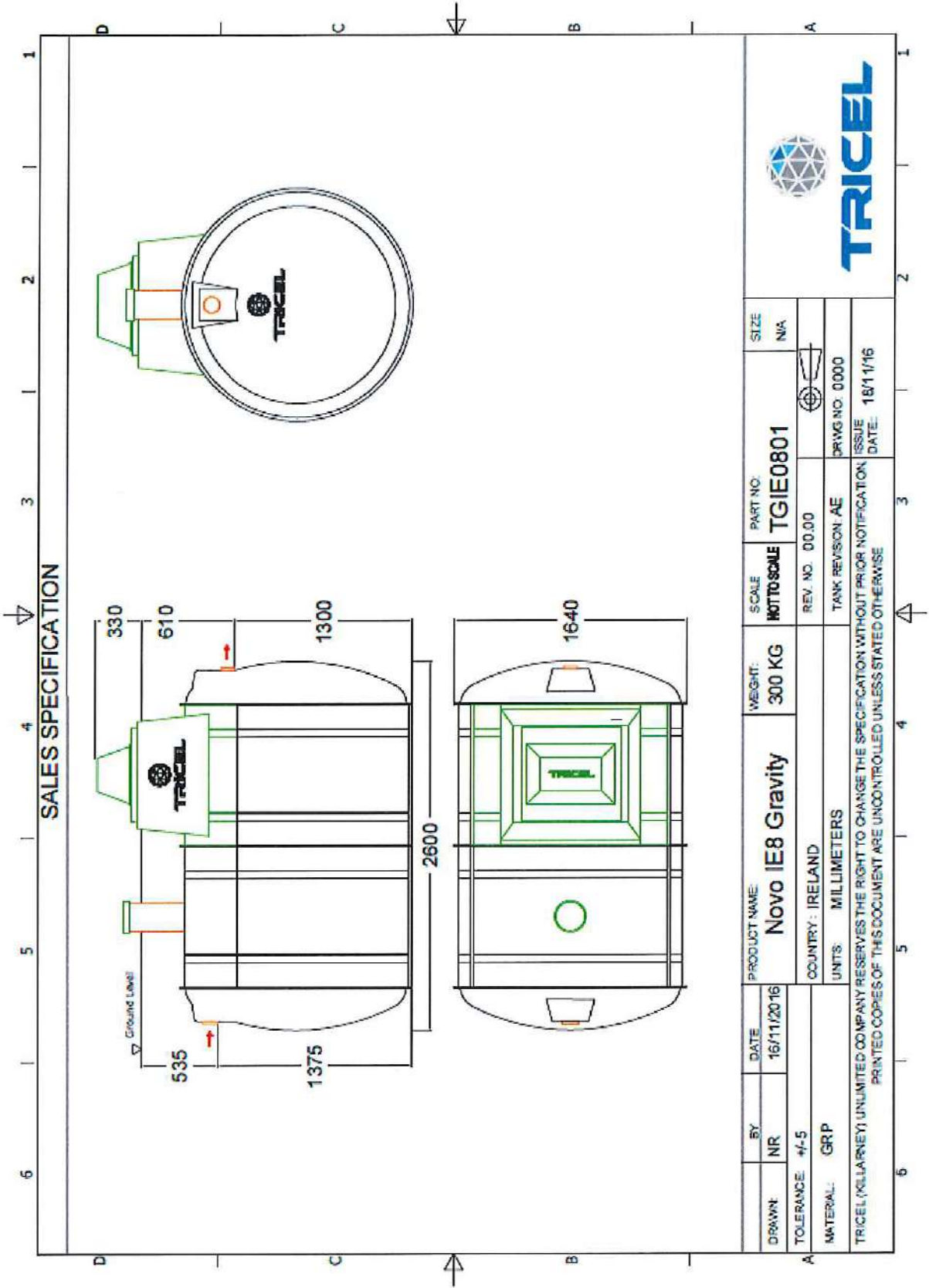




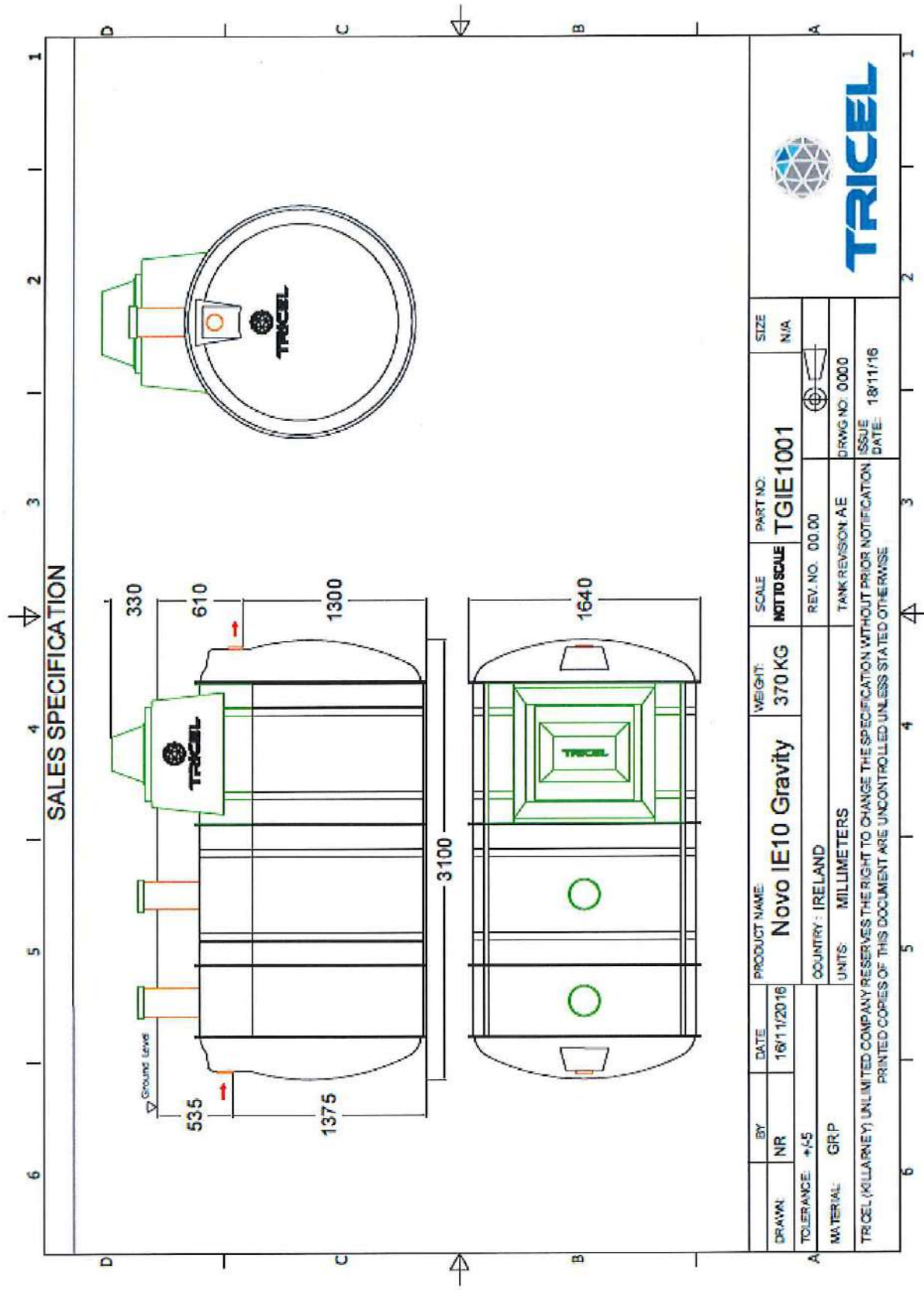
**SALES SPECIFICATION**

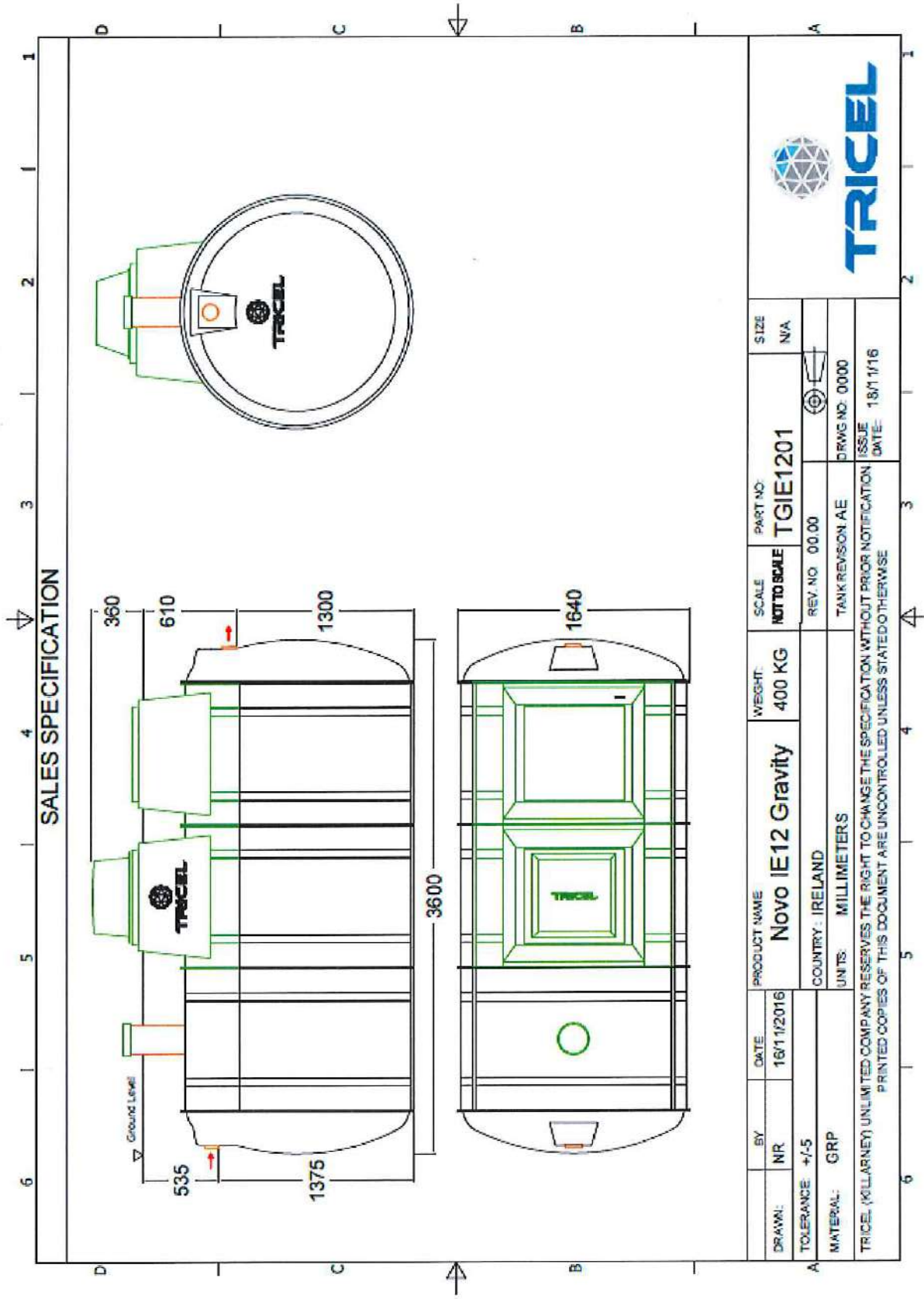
BY: NR		DATE: 16/11/2016		PRODUCT NAME: <b>Novo IE6+ Gravity</b>		WEIGHT: <b>300KG</b>		SCALE: <b>NOT TO SCALE</b>		PART NO: <b>TGIE0601</b>		SIZE: <b>N/A</b>	
TOLERANCE: +/-5		COUNTRY: IRELAND		UNITS: MILLIMETERS		REV. NO: 00.00		TANK REVISION: AE		DRAWG NO: 0000		ISSUE DATE: 18/11/16	
TRICEL (KILLARNEY) UNLIMITED COMPANY RESERVES THE RIGHT TO CHANGE THE SPECIFICATION WITHOUT PRIOR NOTIFICATION. ISSUE DATE: 18/11/16 PRINTED COPIES OF THIS DOCUMENT ARE UNCONTROLLED UNLESS STATED OTHERWISE													





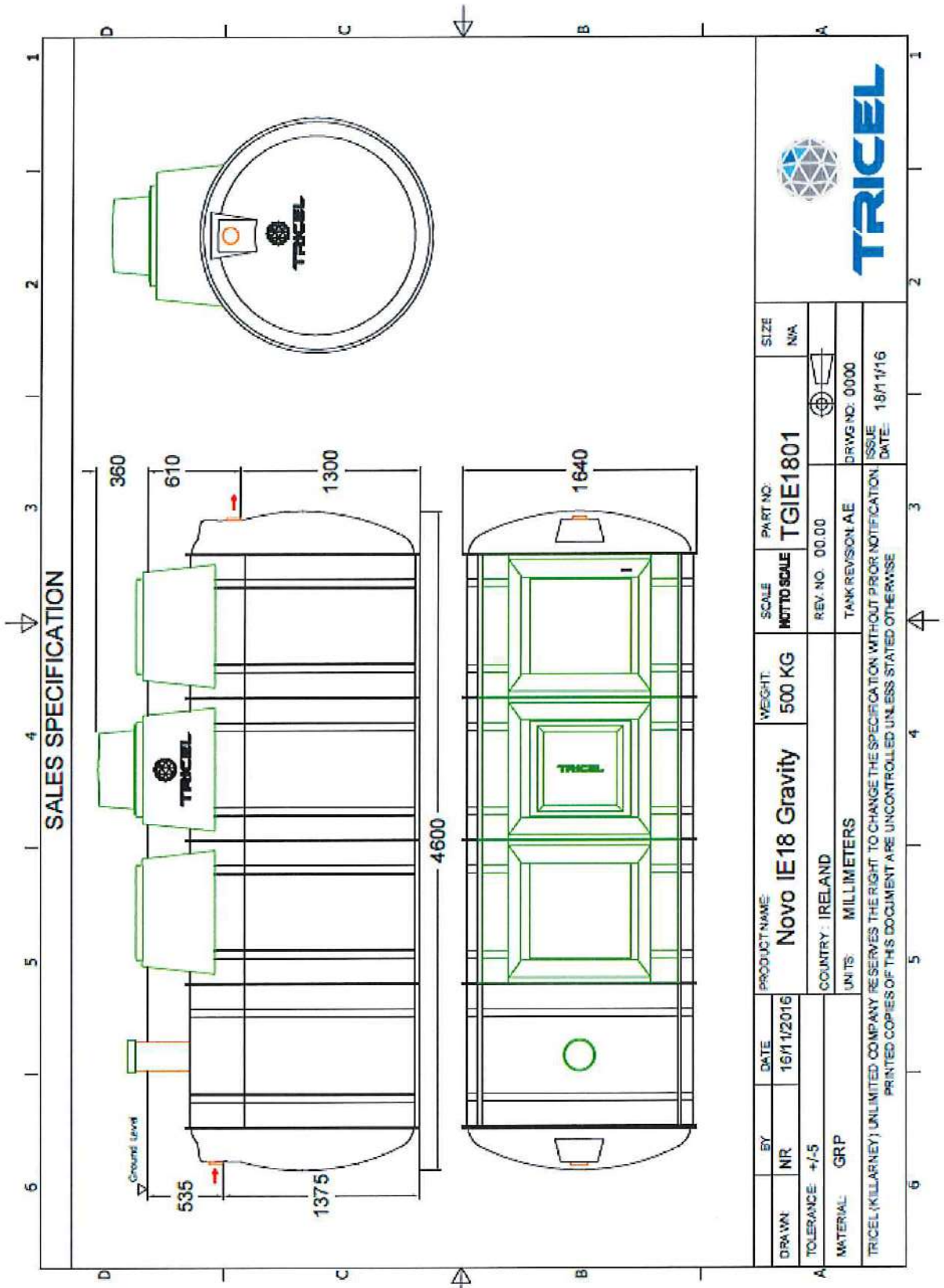






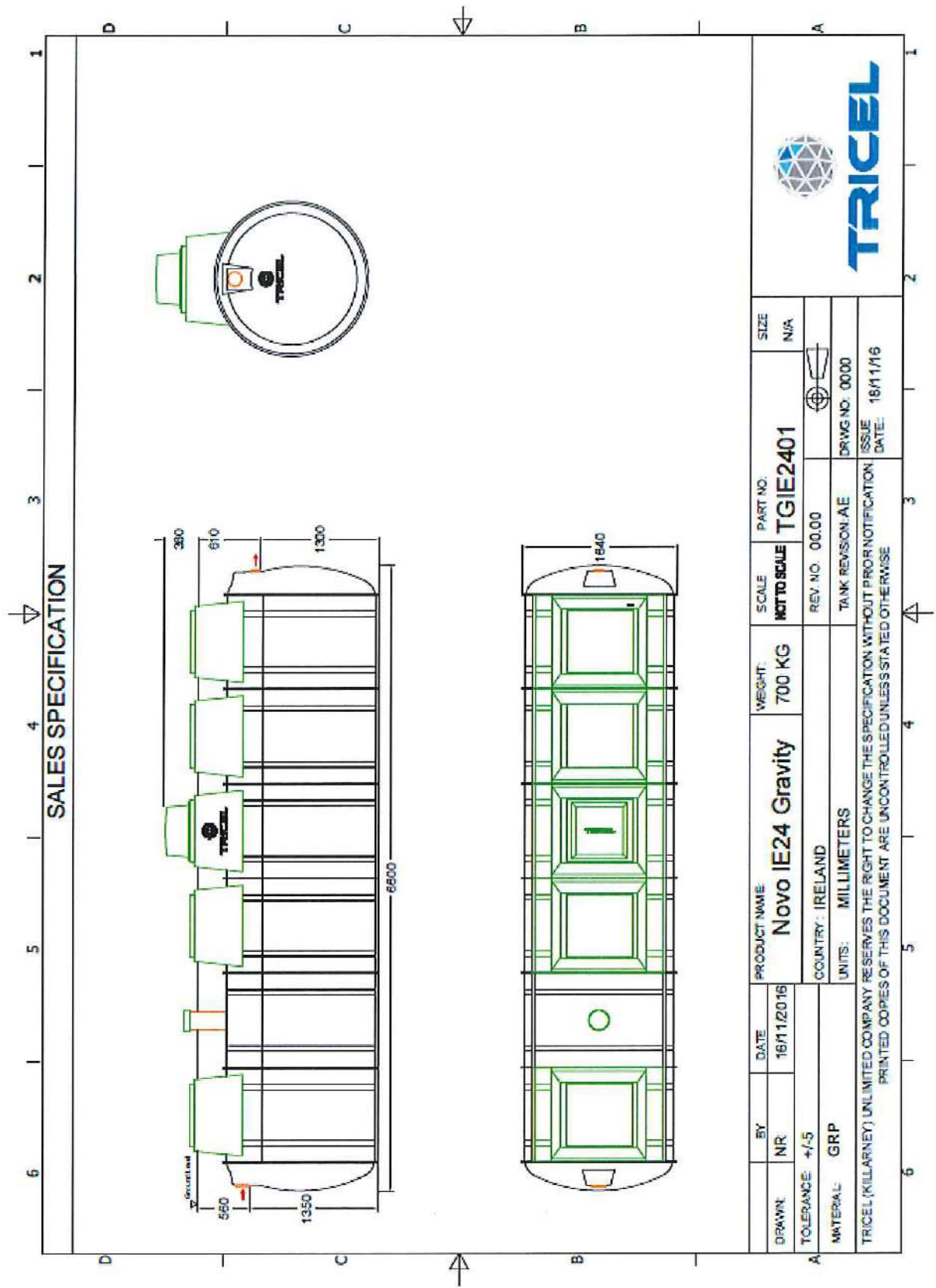
BY: NR		DATE: 16/1/2016		PRODUCT NAME: <b>Novo IE12 Gravity</b>		WEIGHT: <b>400 KG</b>		SCALE: <b>NOT TO SCALE</b>		PART NO: <b>TGIE1201</b>		SIZE: <b>N/A</b>	
TOLERANCE: +/-5				COUNTRY: <b>IRELAND</b>				REV. NO: <b>00.00</b>		TANK REVISON: <b>AE</b>		DRWS NO: <b>0000</b>	
MATERIAL: <b>GRP</b>				UNITS: <b>MILLIMETERS</b>								ISSUE DATE: <b>18/1/16</b>	
TRICEL (KILLARNEY) UNLIMITED COMPANY RESERVES THE RIGHT TO CHANGE THE SPECIFICATION WITHOUT PRIOR NOTIFICATION PRINTED COPIES OF THIS DOCUMENT ARE UNCONTROLLED UNLESS STATED OTHERWISE													







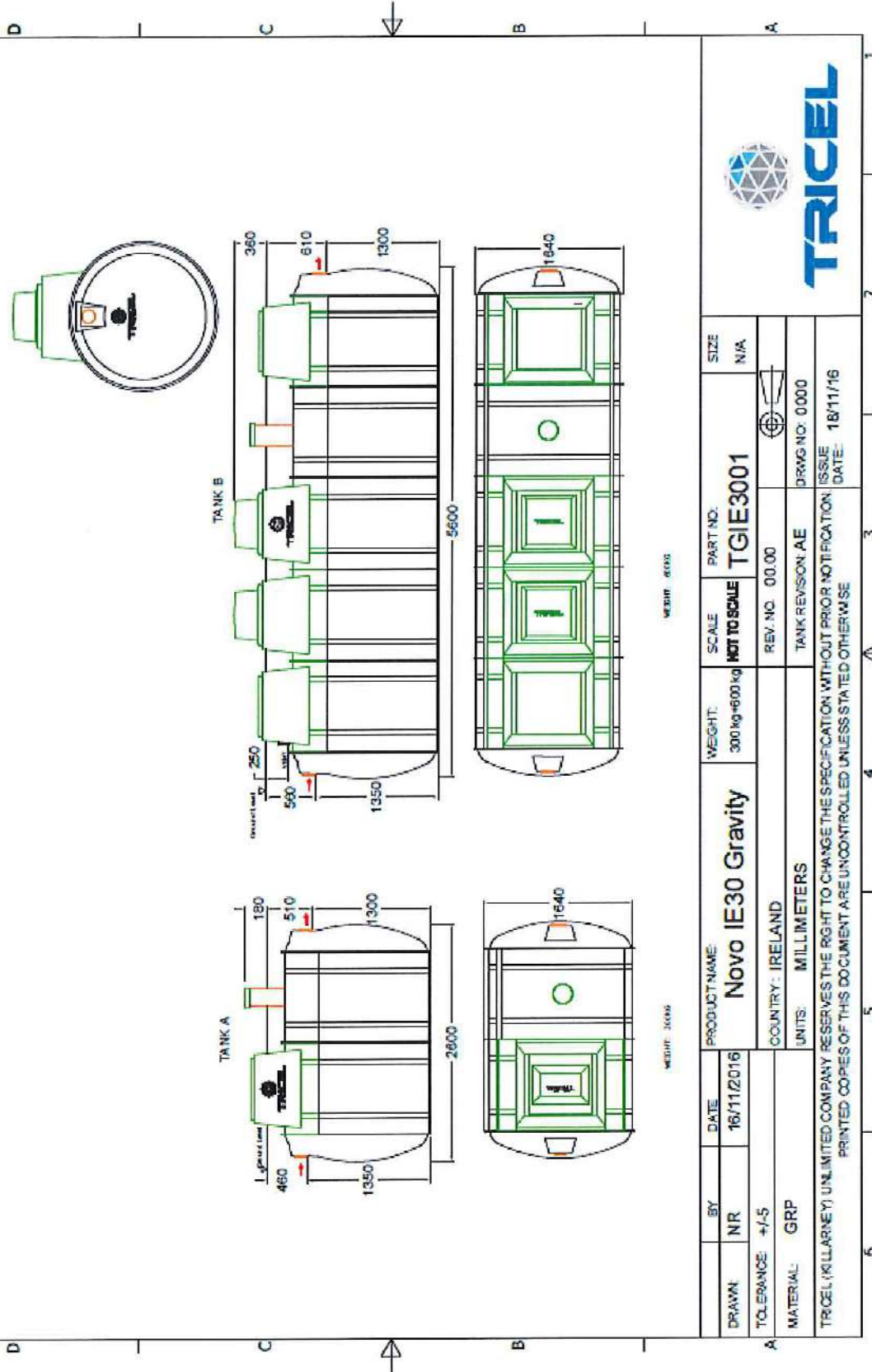
**SALES SPECIFICATION**



BY	DATE	PRODUCT NAME	WEIGHT	SCALE	PART NO.	SIZE
NR	16/11/2016	<b>Novo IE24 Gravity</b>	<b>700 KG</b>	<b>NOT TO SCALE</b>	<b>TGIE2401</b>	N/A
TOLERANCE: +/-5		COUNTRY: IRELAND		REV. NO. 00.00		
MATERIAL: GRP		UNITS: MILLIMETERS		TANK REVISION: AE		
TRICEL (KILLARNEY) UNLIMITED COMPANY RESERVES THE RIGHT TO CHANGE THE SPECIFICATION WITHOUT PRIOR NOTIFICATION. ISSUE DATE: 16/11/16 PRINTED COPIES OF THIS DOCUMENT ARE UNCONTROLLED UNLESS STATED OTHERWISE						

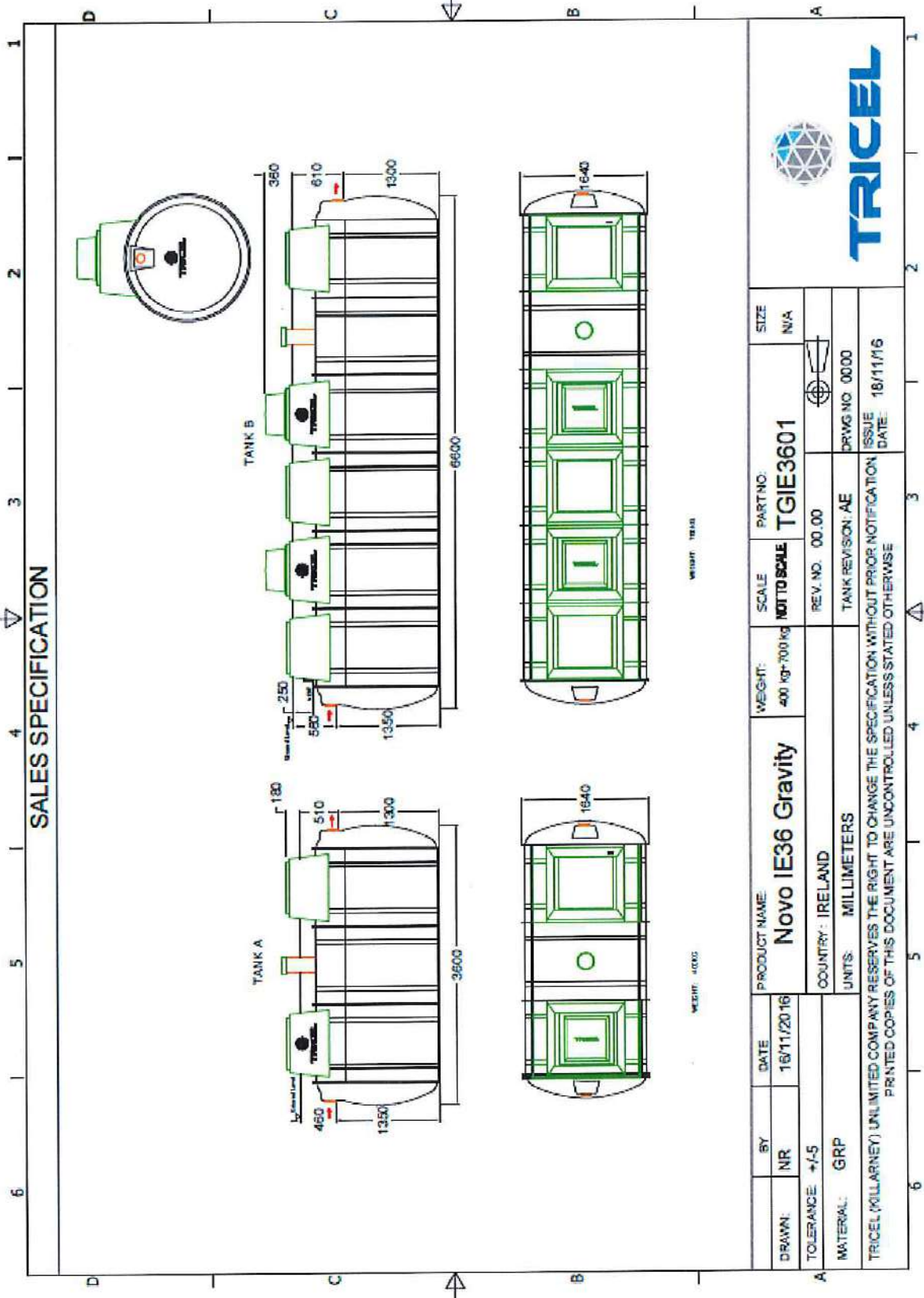


SALES SPECIFICATION



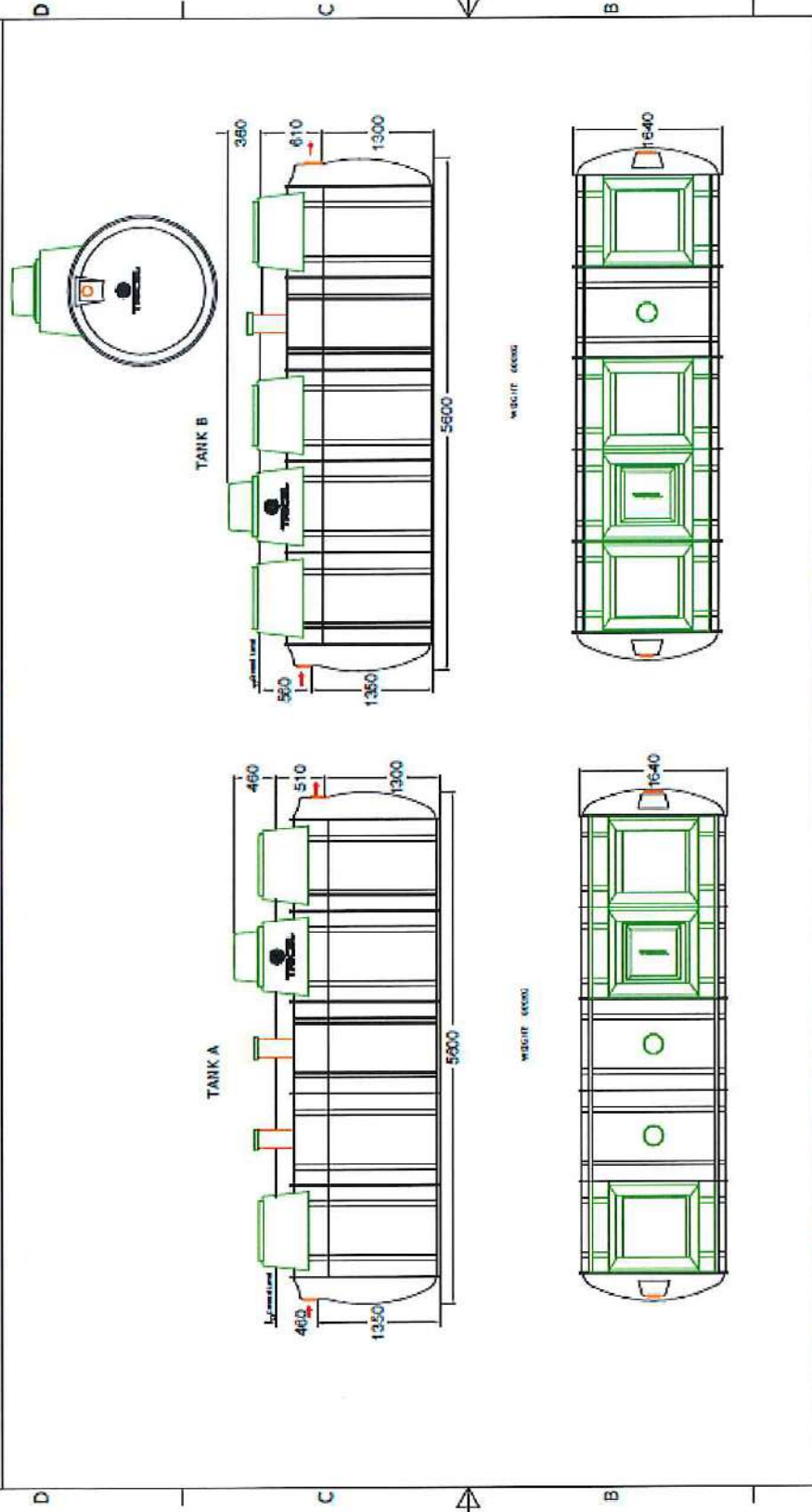
BY: NR	DATE: 16/11/2016	PRODUCT NAME: Novo IE30 Gravity	WEIGHT: 300 kg ±600 kg	SCALE: NOT TO SCALE	PART NO: TGIE3001	SIZE: N/A
TOLERANCE: +/-5		COUNTRY: IRELAND	REV. NO: 00.00	TANK REVISION: AE	DRWG NO: 0000	
MATERIAL: GRP		UNITS: MILLIMETERS	TRICEL (WILLARNEY) UNLIMITED COMPANY RESERVES THE RIGHT TO CHANGE THE SPECIFICATION WITHOUT PRIOR NOTIFICATION. ISSUE DATE: 18/11/16			
PRINTED COPIES OF THIS DOCUMENT ARE UNCONTROLLED UNLESS STATED OTHERWISE						







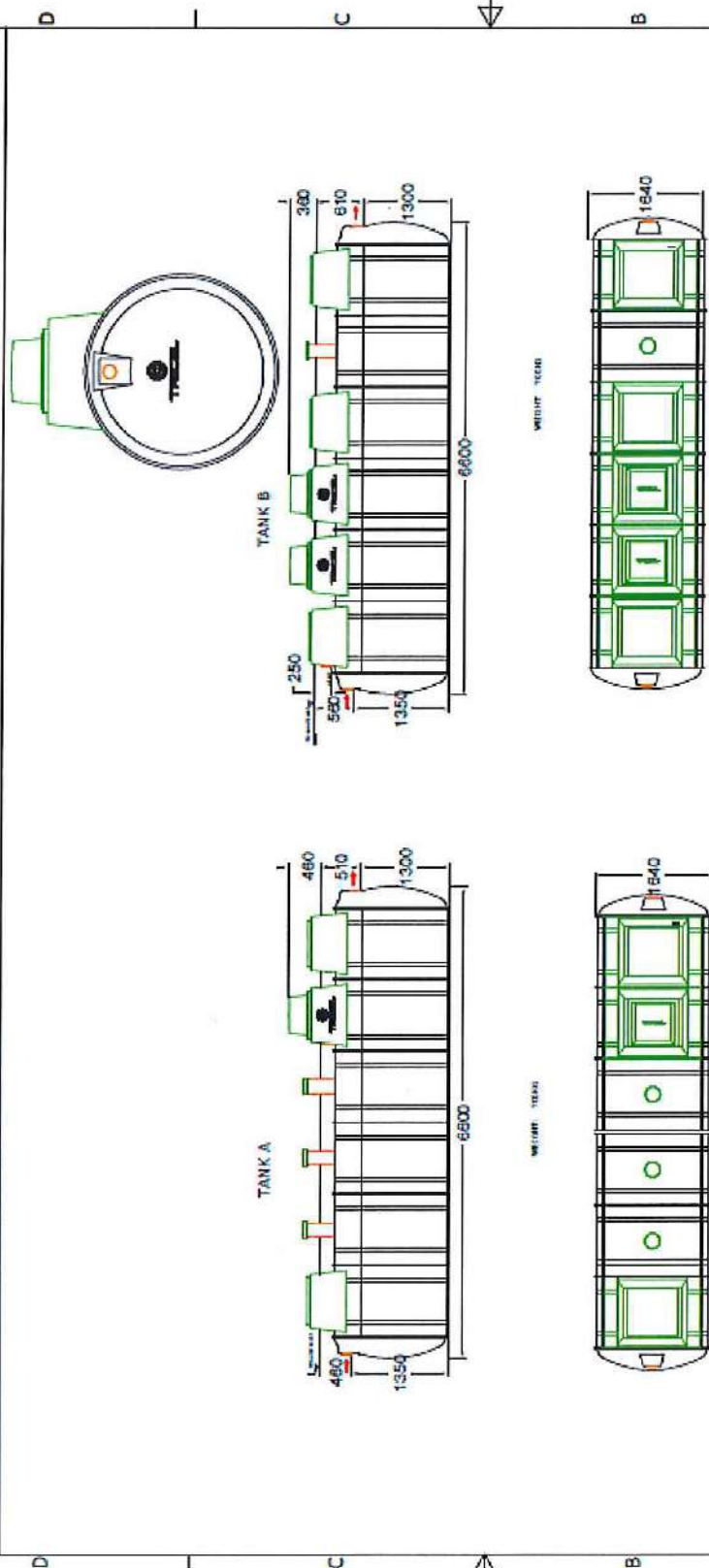
SALES SPECIFICATION



BY: NR	DATE: 16/11/2016	PRODUCT NAME: Novo IE42 Gravity	WEIGHT: 600 kg+800 kg	SCALE: NOT TO SCALE	PART NO: TGIE4201	SIZE: N/A
TOLERANCE: +/-5		COUNTRY: IRELAND		REV. NO. 00.00	TANK REVISION: AE	DRWG NO: 0000
MATERIAL: GRP		UNITS: MILLIMETERS				ISSUE DATE: 18/11/16
TRICEL (KILLARNEY) UNLIMITED COMPANY RESERVES THE RIGHT TO CHANGE THE SPECIFICATION WITHOUT PRIOR NOTIFICATION. PRINTED COPIES OF THIS DOCUMENT ARE UNCONTROLLED UNLESS STATED OTHERWISE						



SALES SPECIFICATION



BY	DATE	PRODUCT NAME:	WEIGHT:	SCALE	PART NO:	SIZE
NR	15/11/2016	<b>Novo IE50 Gravity</b>	700 kg+700 kg	<b>NOT TO SCALE</b>	<b>TGIE5001</b>	N/A
TOLERANCE:		COUNTRY: IRELAND		REV. NO. 00.00		
MATERIAL:	GRP	UNITS: MILLIMETERS		TANK REVISION: AE		
TRICEL (KELLARNEY) UNLIMITED COMPANY RESERVES THE RIGHT TO CHANGE THE SPECIFICATION WITHOUT PRIOR NOTIFICATION. ISSUE DATE: 18/11/16 PRINTED COPIES OF THIS DOCUMENT ARE UNCONTROLLED UNLESS STATED OTHERWISE						

