



**TRICEL**  
CONSTRUCTION

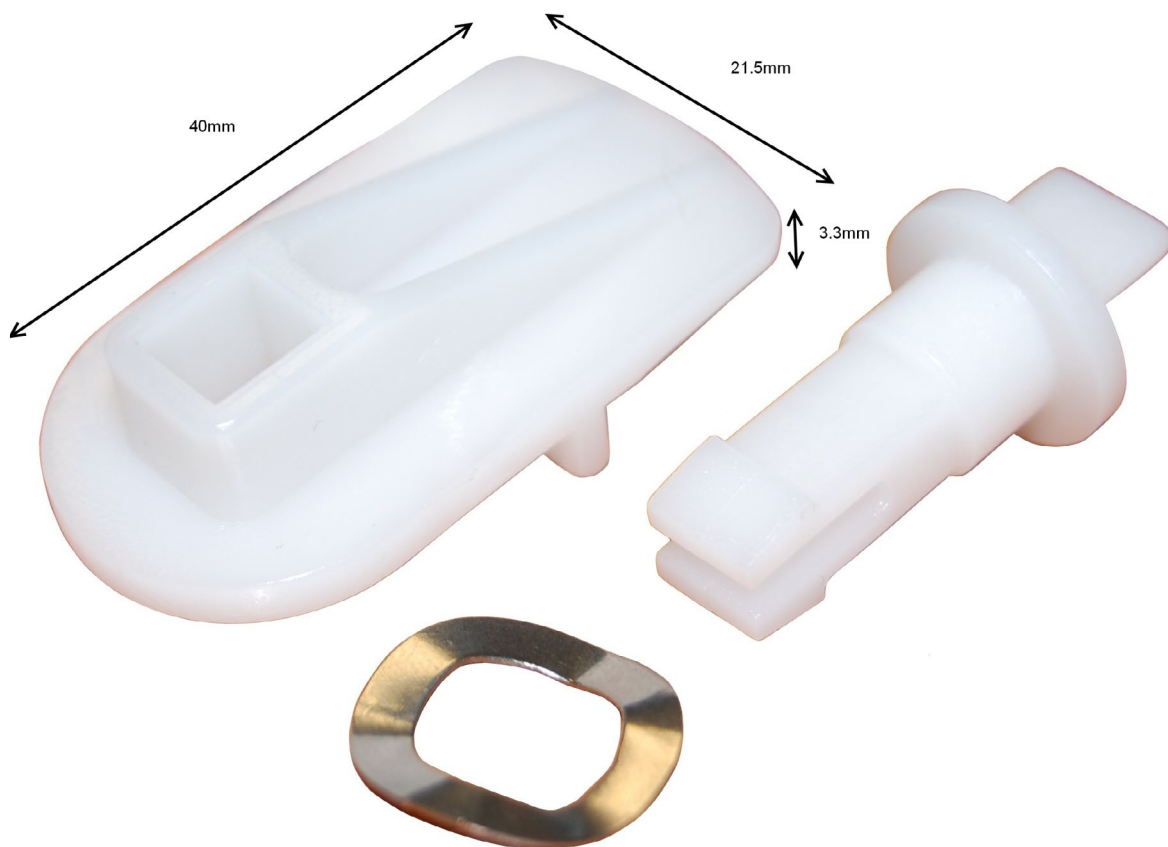
# Meter box replacement latch

STOCK CODE: EK0006

Replacement latch - Suitable for most gas and electric meter boxes.

## INSTALLATION

1. Remove the old lock from the door.
2. Place the latch (40x21.5mm) section on the inside of the door.
3. From the outside of the door insert the wavy washer.
4. Insert the latch post clicking it into place.



In accordance with Tricel's normal policy of product development these specifications are subject to change without notice.

Tricel (Gloucester) Ltd. - Fox House, Stonedale Road, Stonehouse, Gloucestershire, GL10 3SA, United Kingdom.

Tel: +44 (0) 1453 791 616 | Email: [sales@uk.tricel.eu](mailto:sales@uk.tricel.eu) | [www.uk.tricel.eu](http://www.uk.tricel.eu)