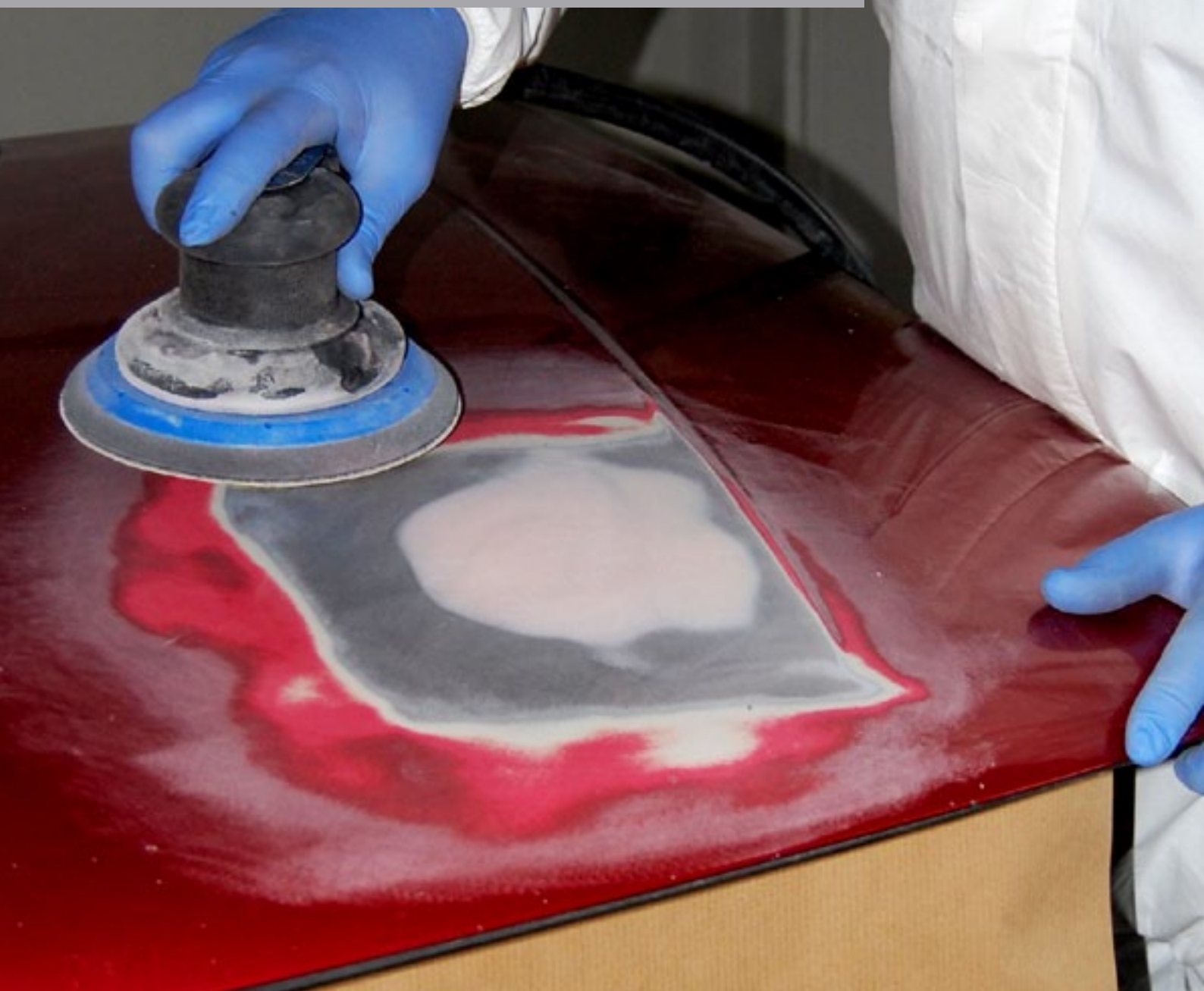


ProWorx - The Professional's Choice

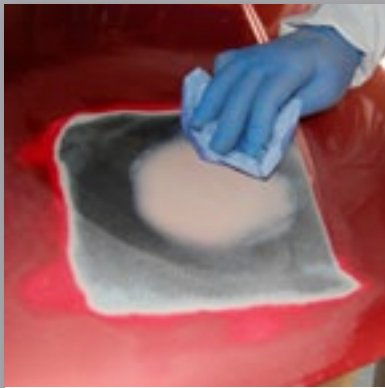
Finishing filler repair



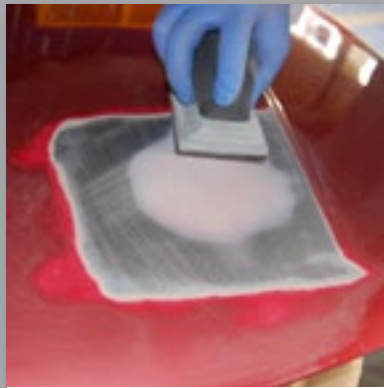
STEP BY STEP

FINISHING FILLER REPAIR

For the finishing touches use Elite or Silk. They provide a super smooth finish every time. Ideal for when you have just completed a big repair and you want to remove those minor imperfections. Easy to apply and easy to sand.



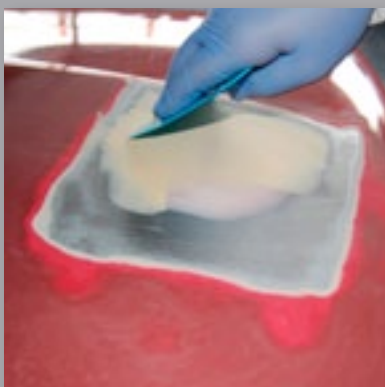
1 Clean and inspect repair area.



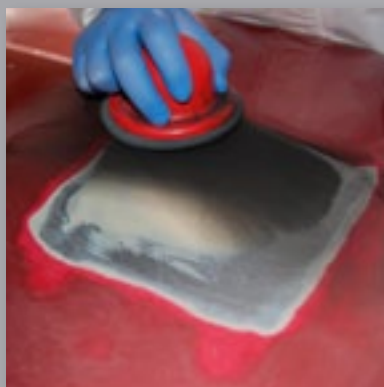
2 Lightly sand surface with a P180 if required.



3 Mix the appropriate amount of ProWorx finishing filler at a ratio of 2% at an ambient temperature of 20°C.



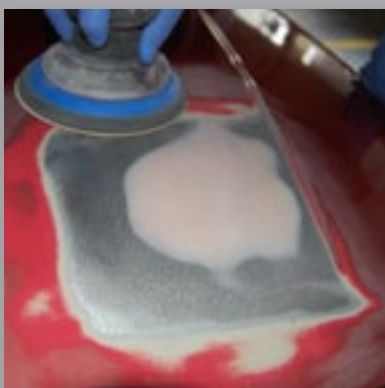
4 Apply the filler with the applicator provided making sure that firm and even pressure is being applied.



5 Once cured apply dry powder guide coat.



6 Block sand with either a P120 or a P180.



7 Feather out repair with P320.



8 Final inspection ready for primer application process.