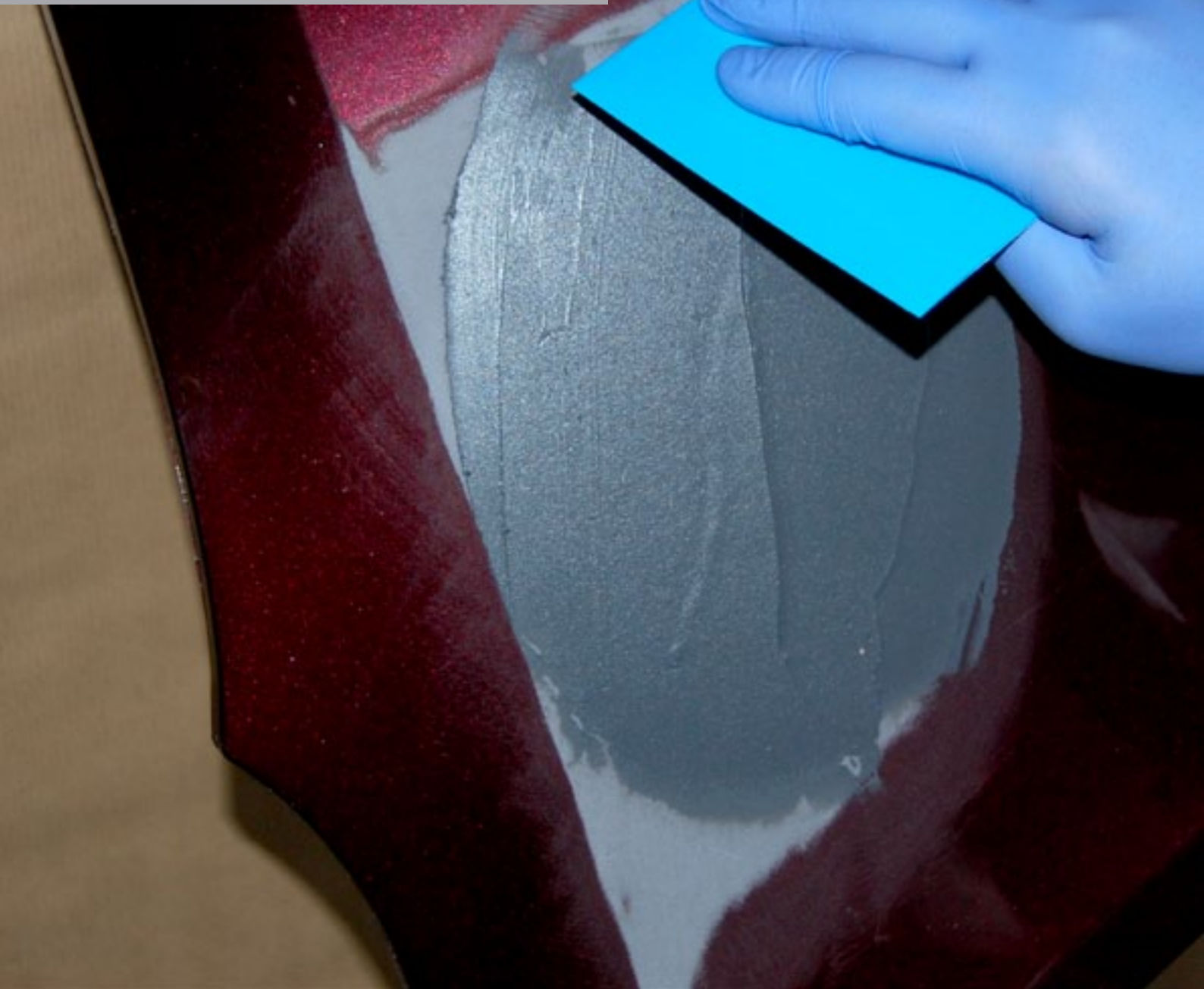


ProWorx - The Professional's Choice

Plastic repair



STEP BY STEP

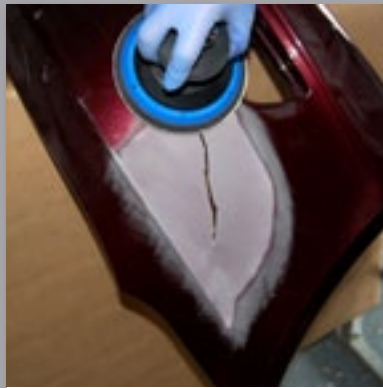
PLASTIC REPAIR

Plex plastic filler process provides a solution for repairing anything from cracks and holes to minor abrasions in most types of automotive plastic parts and is perfect for plastic bumpers.

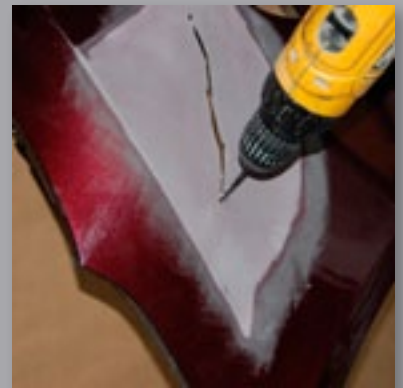
Plex provides great flexibility and durability which makes repairing plastics exceptionally quick and easy, it provides a high quality, long lasting efficient repair.



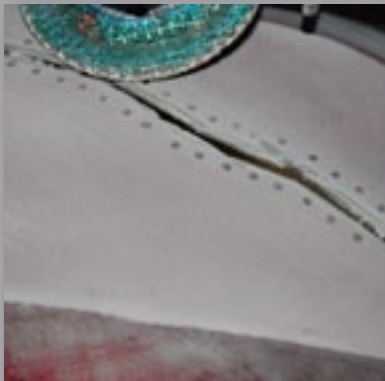
1 Clean and degrease the area to be repaired on the front and reverse.



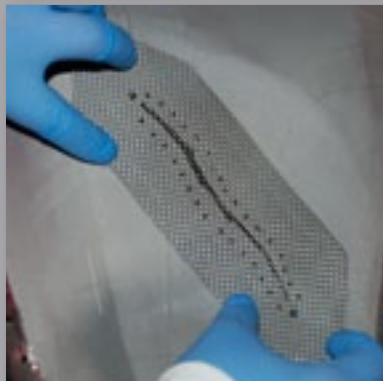
2 Remove all the paint in the affected area with a DA sander using a P120/P180 grit disc.



3 Drill a hole approximately 3mm at the end of the split to relieve the chance of further cracking/splitting.



4 Drill a number of 3mm holes either side of the repair (this is known as shoe lacing). Then using a die grinder/file grind a "V" shaped channel into the repaired area. Key the back of the plastic in the area to be repaired.



5 Take a piece of fabric webbing material and cut to the approximate size of the repair.



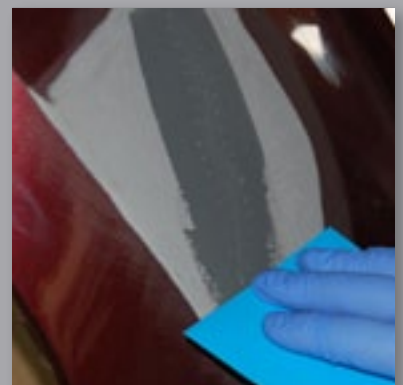
6 Degrease both sides and apply a thin layer or coating of adhesion promoter.



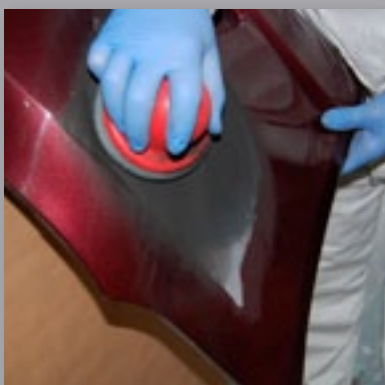
7 Mix the appropriate amount of Plex filler with hardener at a ratio of 2% at an ambient temp of 20°C.



8 Apply the Plex to the fabric webbing and then apply with a firm even pressure to the reverse of the repair area.



9 Take the applicator supplied and spread the Plex smoothly on the outer repair surface.



10 Once cured, apply dry powder guide coat.



11 Block sand with either a P120 or a P180 feathering out with a P320 to finish.